



OPEN PLAY
Sustainable Learning Equipment

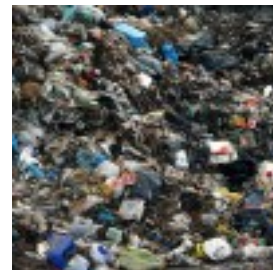
ENVIRONMENTAL BENEFITS

Thanks to Government legislation and environmental awareness raising campaigns, most people know how much damage waste plastic can do to the environment.

Consider these statistics:

Australia manufactures more than 1.3 million tonnes of plastic every year - more than 71 kg for every person. Plastic bags and other plastic garbage thrown into the ocean kill as many as 1,000,000 sea creatures every year. Australians use approximately 6 billion plastic bags each year – that’s around 280 bags per person, per year. Plastic takes 500-5000 years to degrade in landfill 90% of all the rubbish collected on Australia’s beaches is plastic – Sydney’s beaches are fouled by 2600 pieces of plastic litter for every kilometre of sand.

Consumers, businesses, industries, councils and governments alike are all now searching for ways to lessen their environmental impact, shrink their energy consumption footprints and use more sustainable products and resources.



HOW WOOD PLASTIC COMPOSITE PRODUCTS ARE BENEFICIAL TO THE ENVIRONMENT:

- *Made from 100% post consumer plastic and wood
- *Do not leach any chemicals into surrounds
- *Reduce waste matter going into landfill
- *Require minimal water for production and water is reused in manufacturing
- *Its use helps to raise awareness about the benefits of recycled products
- *Don't require precious natural resources for production
- *Less energy is required to recycle plastic than is needed to make new plastic
- *Can be used to substitute other products that do require natural resources
- *New employment opportunities in a growth industry – better for the community
- *Require low energy for production
- *Manufacturing produces almost zero emissions

The plastic used is very specifically blended for the manufacturer and is made up of ALL washed, de-gassed High Density Polyethylene (HDPE) only. The manufacturer has very strict guidelines in the quality of plastic used to ensure that all contaminants are removed.





OPEN PLAY

Sustainable Learning Equipment

Benefits to Our Educational Spaces



- **Open Play is 100% maintenance free**
- **100% designed & manufactured in Australia**
- **Open Play's composite material is 100% recycled from Australian rubbish and is environmentally friendly.**
 - **much smaller carbon footprint left in manufacturing recycled as compared to the massive amount of energy required to make new plastic / HDPE...**
 - **Puts recycling in to practice in Services that are looking to reduce the amount of plastic in their spaces.**
- **The composite material is super stable and won't rot, crack, peel or warp in all weathers.**
 - **Designed to be left outside in full weather**
 - **Items can be hosed down and water play is encouraged**
- **Large Heavy Duty design for durability and function :**
 - **Greater stability due to extra width and depth**
 - **More usable play space for children**
 - **Most substantial items are fully constructed eg. Outdoor Home Corner and Shelving.**

